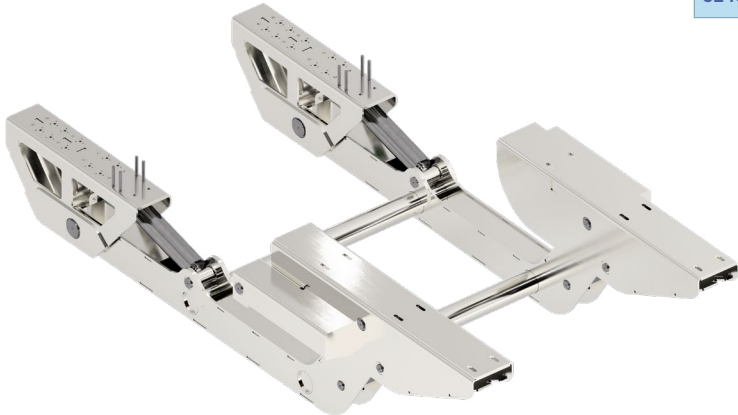


# TENDER LIFT FOR CATAMARANS 5240

loading capacity 700 Kg



model	A (mm/ inch)	A1 (mm/ inch)	B (mm/ inch)	C (mm/ inch)	C1 (mm/ inch)	F mm/ inch)	f (mm/ inch)	f1 (mm/ inch)	L (mm/ inch)	M (mm/ inch)	α	R (mm/ inch)	R1 (mm/ inch)	S (mm/ inch)	Material	capacity standard (kg/lbs)	weight (kg/lbs)
5240/20	467 18 <sup>3</sup> / <sub>16</sub>	1025 40 <sup>1</sup> / <sub>16</sub>	2005 78 <sup>9</sup> / <sub>16</sub>	1580 62 <sup>1</sup> / <sub>16</sub>	1665 65 <sup>3</sup> / <sub>16</sub>	720 28 <sup>1</sup> / <sub>16</sub>	1084 42 <sup>3</sup> / <sub>16</sub>	994 39 <sup>1</sup> / <sub>16</sub>	-362 14 <sup>1</sup> / <sub>16</sub>	385 15 <sup>1</sup> / <sub>16</sub>	0°	445 17 <sup>1</sup> / <sub>16</sub>	245 9 <sup>3</sup> / <sub>16</sub>	230 9	AISI 316L	700/1540	520/1145



Lifting mechanism for hydraulic stern platforms that allow and ease dinghies, tenders and jet skis hauling.  
 Supplied in two arms combinations, they are fully made of steel AISI 316L.  
 Compared to our traditional Tender Lift, this new type is particularly suitable for catamarans, as it better fits to boat transom, thanks to its reduced height, however granting a high platform stroke.  
 Customisable dimensions and loading capacities to meet your requirements.

